

SMCems

Environmental Monitoring system



SMCems, Environmental Monitoring System is a total solution platform for meteorological and environmental instruments monitoring and recording.

The SMCems enables the manager's, crew and shore based staff the ability to monitor environmental information before, during and after sea going operations.

The SMCems allows for good planning through reports, live monitoring in the clear graphical interface and with the aid of the detailed system log function the possibility to review any and all events.

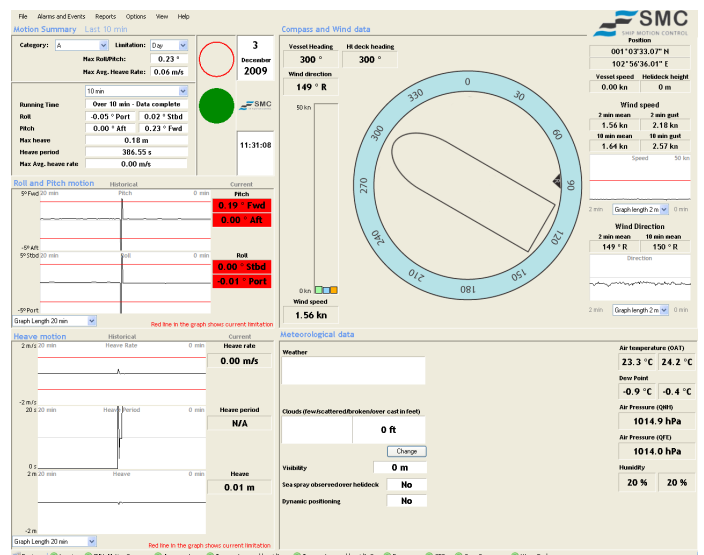
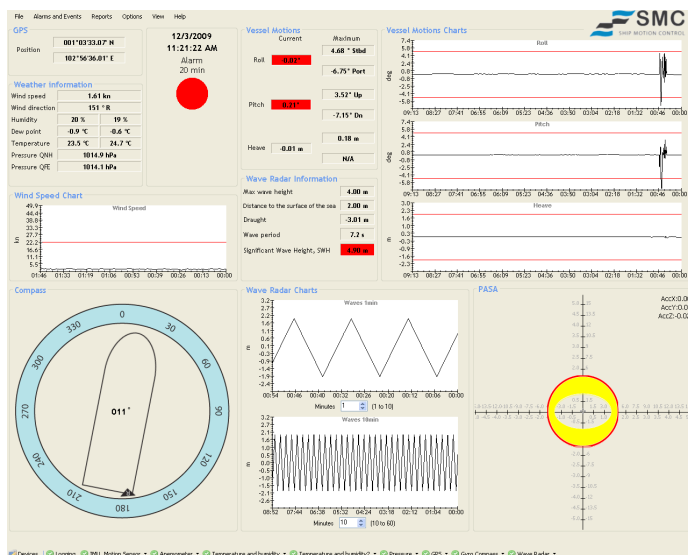


System Interface

The SMCems collects data from a wide range of oceanographic and meteorological instruments and integrates all the data into one graphical system. The SMCems is flexible and can be adapted for individual vessel requirements based on selected instruments and preferred graphical interface layouts. The SMCems interfaces with environmental instruments from various manufacturers and can also interface with existing onboard instruments to reduce system costs.

All measured data is processed in the integrated software and then displayed in an easy-to-read graphical interface in real time. The data is presented both in graphical charts and as numerical data.

The environmental monitoring system is user customized to specific organizations requirements. The interface is adjustable to fit a system or project purpose. Several graphical interfaces are commonly combined into one system for example the helideck monitoring system and environmental monitoring system.



Logging

Captured data from all the connected instruments is recorded into a log file that can be replayed and analyzed in the built in log view function. The recorded data can be exported into a comma separated text file (.csv) for analysis in external software.

The recording of data into the log file is continuous, with no limitation of the time the data is stored on the server HDD. The SMCems can also output a summary of the recorded data into various report formats ex. Helideck Reports.



Web based Client system included

The SMCems system can distribute the system data over the LAN/Internet enabling a web based client interface of the system to be viewed at any workstation onboard the vessel or from shore based operational control centers. The number of simultaneous clients is unlimited and the server - client function is included as a standard part of the SMCems package.

There are no additional license costs for this system.

The client interface enables different graphical interfaces to be viewed at different stations. An example would be the Operational staff on the bridge can view the environmental monitoring interface while the radio room operator may view the Helideck Graphical interface.

